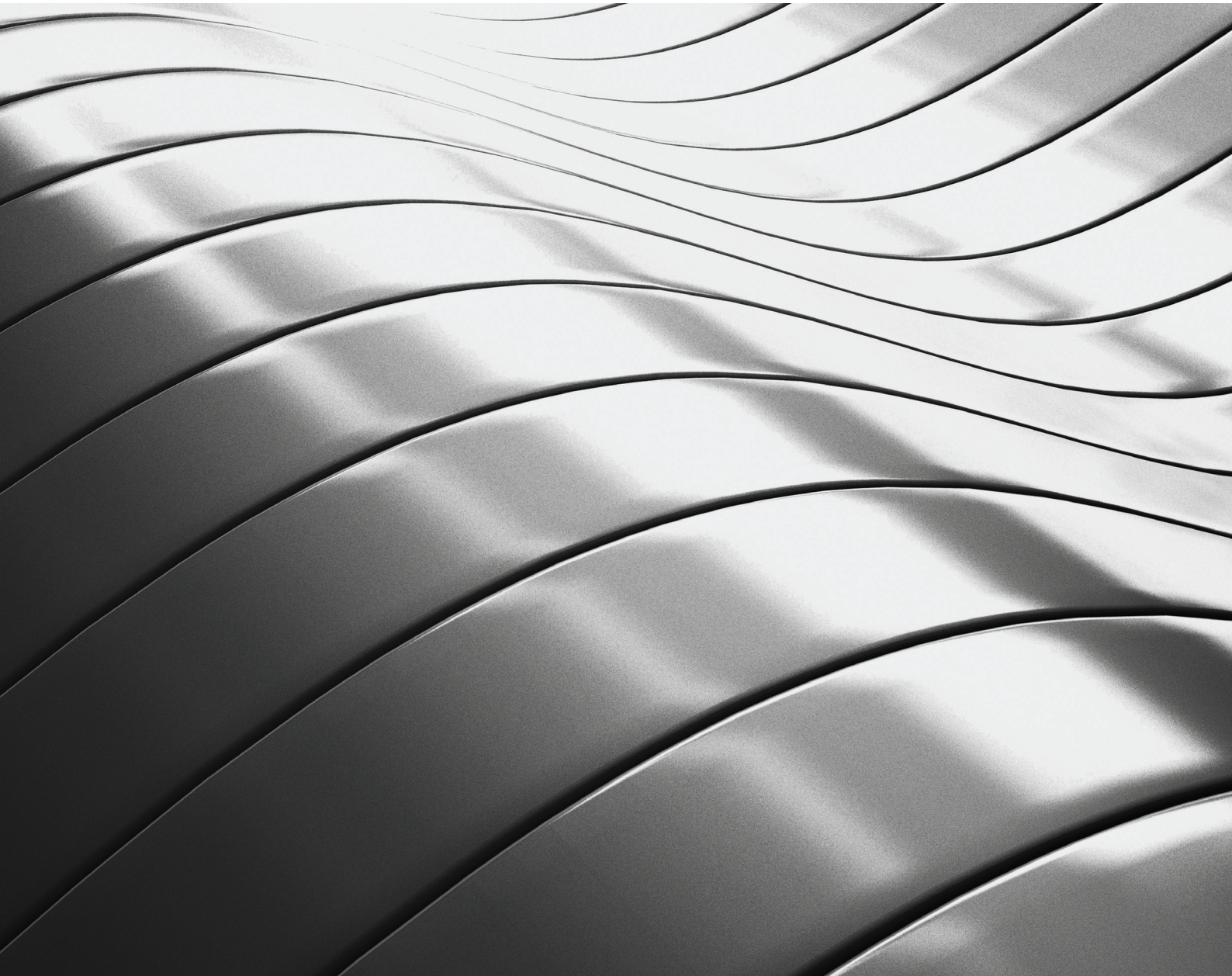


METALLIC COMPOUNDS

for the Automotive Market

- Excellent solutions for paint replacement
- Outstanding scratch resistance
- Extended UV stability for harsh exterior conditions



LyondellBasell Silver Metallic Product Line

for the Automotive Market

In the last few years, decorative metallic effects had a comeback in modern automotive design. Cool and shiny parts can be found in vehicles' interiors as well as exteriors.

LyondellBasell offers a unique silver metallic product line, which is based on various thermoplastic polymers and blends.

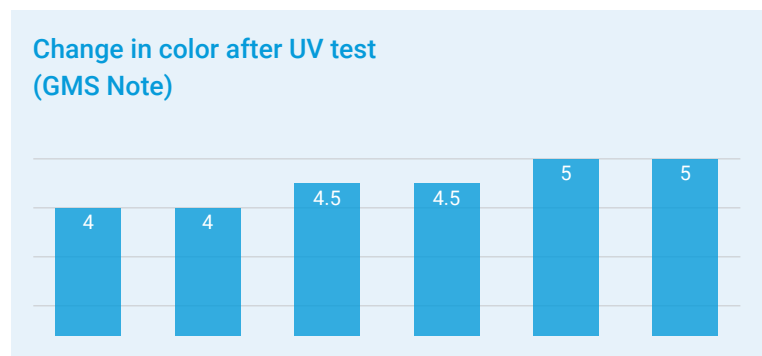
The advantages of an in-depth colored plastic part are twofold. On the one hand, a full in-mold part reduces the handling steps, because spray painting is not needed; on the other hand, the metallic look remains, even if the piece is scratched or damaged at the surface.

Grades are formulated for improved processability in molding, injection molding or extrusion. Depending on customers' needs, our silver metallic solutions can also come with different surface effects and different basic polymers.



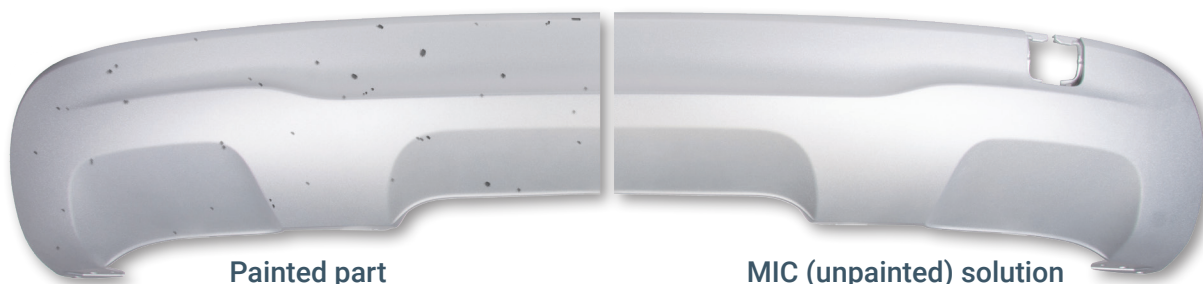
Weathering / UV Resistance

LyondellBasell metallic compounds not only excel at the aesthetics of the surface but also offer excellent resistance against weathering and extended UV exposures to maintain the excellent metallic surface effect. Below is a short overview of the material performance of each of the polymers when exposed to prescribed tests as per their respective OEM norms:



Stone Chip: Paint vs. Mold-In-Color (MIC) Solution

- LyondellBasell's MIC solution is an excellent answer to the problem of stone chips on painted surfaces.
- Stone chips on painted surfaces result in a prominently visible mark, devaluing the appearance of the part.
- With our MIC solution, on the other hand, the stone chip is hardly visible despite the damage caused in the form of a scratch.



LyondellBasell Metallic Compounds

Decorative Materials Now with Mold-In-Color Solutions

LyondellBasell metallic compounds deliver high gloss and deep metallic effects in any color and multiple base polymers. Custom-made solutions help meet the specific demands of the application.

Product features

- The right choice and combination of metallic pigments offers a superior metallic effect
- Color shades can be matched according to customers' needs
- Depending on part and mold geometry, replacement of spray painting is possible
- For new projects LyondellBasell offers expert technical support such as injection-molding simulation, guidance on mold and part design and practical support on-site of processing

Molding metallic compounds without painting – crucial factors to be considered:

- Optimized part design (wall thickness, corners, holes, etc.)
- Improved mold design (gate positioning, nozzle and runner setup, number of cavities)
- Positioning of weld lines into non-visible areas

Ronfalin (ABS)

- High-flow for easy injection-molding grade
- High-impact ABS grade for robust and long-life parts

Ronfalin (ASA)

- High-flow for easy injection-molding grade
- Extra UV stabilized for automotive exterior application

Polyfort FIPP

- Optimized flow behavior to avoid tiger stripes/flow lines
- Extended UV stability for harsh exterior conditions

Schulamid 612

- Excellent chemical resistance
- High heat distortion temperature
- Good mechanical and dimensional stability

Schulablend (PA/ABS) M/MK

- High-flow for easy injection-molding grade
- High-impact, LE product optimized for automotive application

Schulaketon NV

- High chemical resistance
- High toughness
- Excellent resilience

LyondellBasell offers vast experience from past projects and can offer guidance and support if involved in the early design stage.

For more information, visit [lyondellbasell.com](https://www.lyondellbasell.com).

The information and recommendations contained in this document are based upon data collected by LyondellBasell and are believed to be reliable; however, because LyondellBasell cannot anticipate or control the many different conditions under which this information and/or product may be used, no representation is made and no warranty is given of any kind, express or implied, for completeness, accuracy, availability, suitability, usefulness, commercial value, or non-violation of intellectual property rights of information, recommendations, and products and services directly or indirectly provided. LyondellBasell assumes no responsibility for the results of the use of products and processes described herein and expressly disclaims the implied warranties of merchantability and fitness for a particular use.