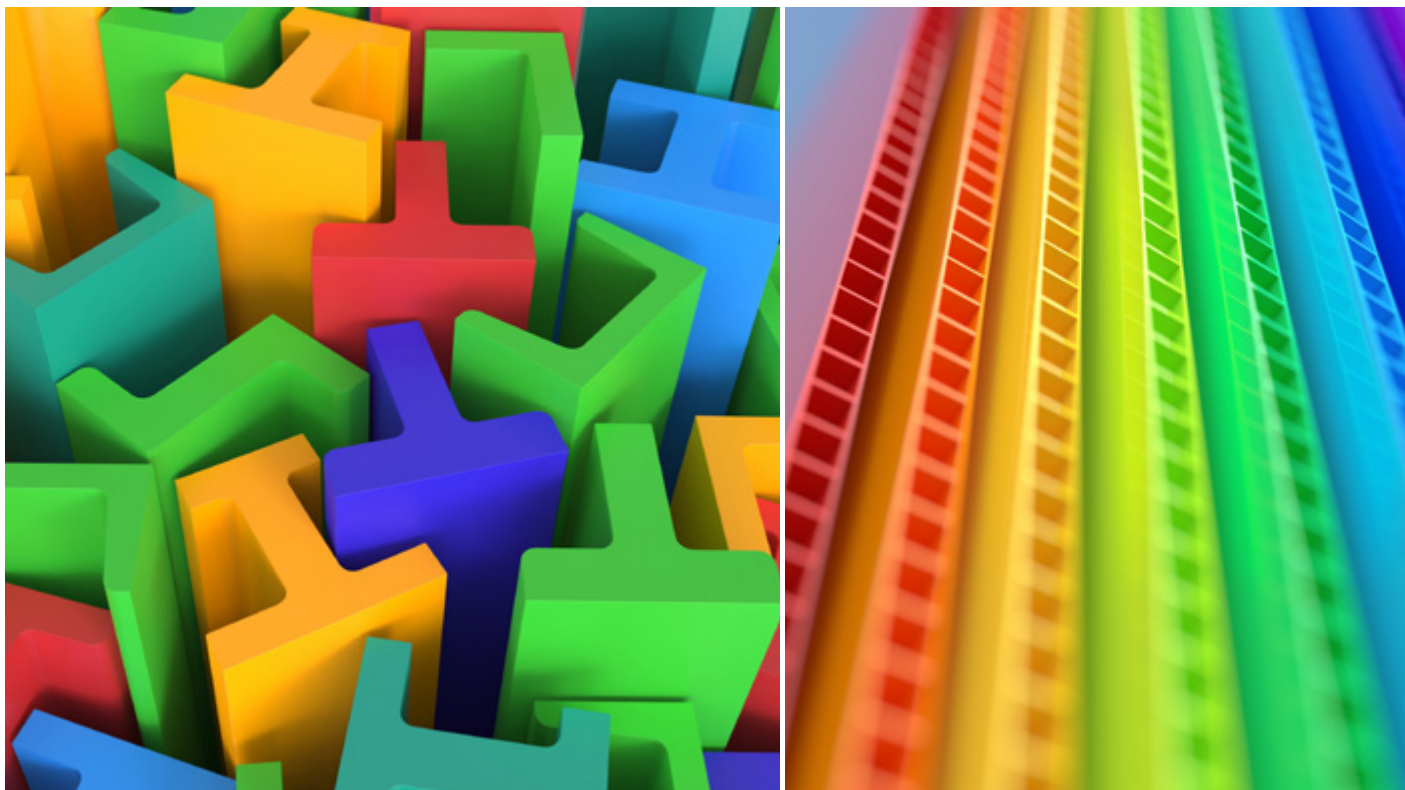


Moplen HE425H

Homopolymer PP grade for Thermoforming and Sheet Extrusion applications



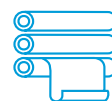
Moplen HE425H is the third grade to be commercialised in a new series of impact-enhanced homopolymers manufactured at the Geelong site in Australia. This low flow, impact modified polypropylene (PP) homopolymer offers improved impact resistance.

This high-performance resin allows customers to utilize this material in the production of sheet, profiles and thermoformed articles.

Product Benefits

- Enhanced impact performance
- Excellent stiffness
- Low odour and taint properties

Some typical applications



Sheet



Thermoformed
Articles

Resin Properties

Typical Properties	Unit	Test Method	HP401H	HE425H
MFR	g/10min	ISO 1133	2.2	1.8
Flexural modulus	MPa	ISO 178	1450	1400
Heat Distortion Temperature (HDT) @ 0.45 MN/ m ²	°C	ISO 75	91	83
Tensile Stress at Yield	MPa	ISO 527	33	30
Impact strength (NI) (notched IZOD at 23°C)	KJ/m ²	ISO 180/1A	6	8.5

Note: Typical properties, not to be considered as specifications

ABOUT US

LyondellBasell (NYSE: LYB) is one of the largest plastics, chemicals and refining companies in the world. Driven by its employees around the globe, LyondellBasell produces materials and products that are key to advancing solutions to modern challenges like enhancing food safety through lightweight and flexible packaging, protecting the purity of water supplies through stronger and more versatile pipes, improving the safety, comfort and fuel efficiency of many of the cars and trucks on the road, and ensuring the safe and effective functionality in electronics and appliances. LyondellBasell sells products into more than 100 countries and is the world's largest producer of polypropylene compounds and the largest licensor of polyolefin technologies. In 2018, LyondellBasell was named to Fortune magazine's list of the "World's Most Admired Companies."

For more information, visit lyb.com or please contact:

AU.Polymers@lyb.com

Any technical advice, assistance, recommendations, testing or reports provided by the LyondellBasell ("LYB") family of companies to you for any reason, including, but not limited to (i) the selection, processing or use of a LYB product, (ii) the storing, handling or usage of a LYB product, or (iii) the modification of a LYB product in an end-use application, or (iv) assistance about technical feasibility of applications, or (v) assistance about design and simulation methods or procedures (collectively, "Technical Assistance") is given and accepted at your sole risk and without any warranty whatsoever. LyondellBasell will have no liability or responsibility for the use of, results obtained from, or any other aspects of the Technical Assistance, including, but not limited to, the preparation and delivery hereof. You are encouraged to verify independently any such Technical Assistance.

Before using a product sold by a company of the LyondellBasell family of companies, users should make their own independent determination that the product is suitable for the intended use and can be used safely and legally. SELLER MAKES NO WARRANTY; EXPRESS OR IMPLIED (INCLUDING ANY WARRANTY OF MERCHANTABILITY OR FITNESS FOR A PARTICULAR PURPOSE OR ANY WARRANTY) OTHER THAN AS SEPARATELY AGREED TO BY THE PARTIES IN A CONTRACT.

LyondellBasell prohibits or restricts the use of its products in certain applications. For further information on restrictions or prohibitions of use, please contact a LyondellBasell representative.

Users should review the applicable Safety Data Sheet before handling the product.

You can find out more about us by visiting our website at: lyb.com

Copyright LyondellBasell Industries Holdings, B.V. 2018

Moplen is a trademark owned and/or used by the LyondellBasell family of companies and is registered in the U.S. Patent and Trademark Office.

lyondellbasell
Advancing Possible