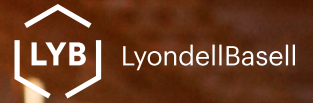


Fall 2025



Channelview community update

Staying ready year-round: Weather preparedness at Channelview

At Channelview Complex, we stay ready for any kind of weather—summer heat, hurricanes or winter freezes. Safety comes first and our team has clear plans in place to protect both people and operations in times of inclement weather.

When storms are on the way, our team meets daily to track changing conditions. We make sure food, rest areas, showers and restrooms are available if people need to stay longer at the site.

In cold weather, we check pipes, add insulation and drain water lines to prevent freezing. In freezing weather, we also provide ice cleats and portable eye wash stations in case water isn't available. In the summer, our "90 Days of Summer" program focuses on staying hydrated, using cooling gear and watching for heat stress.

If heavy rain threatens our site, we place sandbags, close docks and increase patrols to keep water out and protect equipment. If lightning strikes within seven miles, all elevated and confined space work stops right away.

For major storms—like hurricanes or hard freezes—we may proactively shut down, working with both local and corporate teams to make the safest decision.

Even with strong preparation, a loss of power or steam can still happen. If it does, safety systems and emergency procedures, including flaring, are used to keep the site secure.

No matter the season, the Channelview site team works year-round to keep our people safe and remain a dependable neighbor in the community.

Community corner

LYB Channelview Complex employees support a number of community organizations and events annually.

Channelview Complex recently celebrated its participation with the Crosby-Huffman Chamber of Commerce at an official ribbon cutting at the site's administrative offices.



The site recently hosted more than 25 North Shore Rotary Club members for a club luncheon. In addition, the site sponsors the group's annual Fish Fry that benefits scholarships for area high schoolers.



Crosby-Huffman Chamber of Commerce Teacher Luncheon – Lunch and door prize sponsor

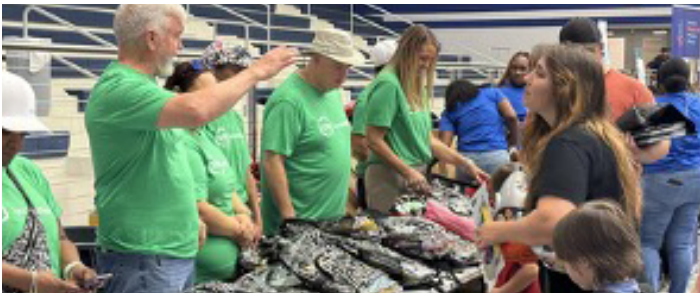


Community corner

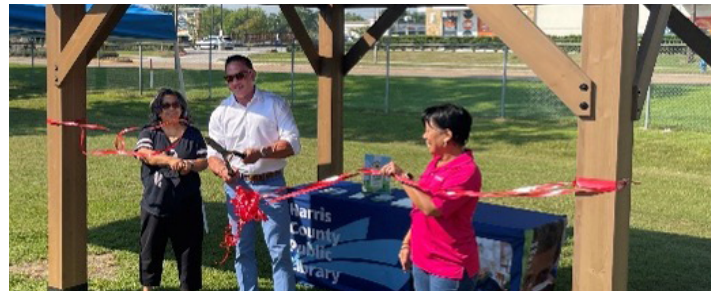
Harris County Precinct 3 Crosby and Barrett Community Centers Summer Camp – Fun Friday sponsor



Channelview ISD Back-to-School Bash – sponsor and volunteer



Harris County North Channel Branch Library – Outdoor Learning Center sponsor



About our facility

The Channelview Complex employs about 2,200 people across its 4,000-acre site. Since 1957, we've produced materials used in everyday items, from car parts to food packaging. We maintain open communication with our neighbors and value community engagement.

Contact us

Do you have questions about the LyondellBasell Channelview Complex facilities? Contact us at askchannelview@lyb.com

8280 Sheldon Road, Channelview, TX 77530

281-862-4000



Rebuilt. Enhanced. The CAER app.

This update brings exciting new features:

- **Interactive Mapping:** Understand incident locations relative to your area
- **Real-Time Push Alerts:** Get timely information during industrial events
- **Quick Reference Guides:** Access emergency resources at your fingertips
- **Spanish Translation:** A Google translate option is available



Scan the QR code for
more information

Stay Informed with CAER

Community members can stay updated about our facility operations through CAER (Community Awareness Emergency Response), an online system and mobile app that provides alerts and messages about operational updates from local facilities. Visit www.ehcma.org/page/caer-online to access this free community resource.

East Harris County } *Making Good.*
MANUFACTURERS ASSOCIATION